



# LAURIE RIVER LODGE TRIP PLANNING GUIDE

2025

American Plan Lodge Customer Edition

# INTRODUCTION

As lodge owners and outfitters in northern Manitoba Erin and I take our responsibilities to our customers very seriously. We understand that it is the little things that turn a mediocre trip into a complete success story. The information and tips included in this booklet should help our customers, especially first timers, know what to expect during their trip to Laurie River Lodge.

While it would be impossible to foresee every scenario or answer every question I will attempt to touch on each aspect of your trip and hopefully will give you an accurate and informative synopsis of what you can expect from the time you book your trip until you arrive back in your home city after the adventure.

The information and tips in this book will help you, our customers, understand the following:

- What you can expect from us as outfitters
- What we will expect from you as our clients
- Where we are and how will you get to us
- What types of fish will you catch and with what equipment
- What is required in terms of clothing and what temperatures you can expect
- What types of accommodations will you be staying in
- What is available in terms of communications
- What is available in terms of medical care
- What can you expect when crossing the USA / Canada border
- What are some of the additional costs associated with the trip

I cannot over emphasize the importance of preplanning and preparation. At a remote, fly-in camp there is no such thing as a quick trip to town. If you have read this book and still have questions, we may be reached at 1-800-426-2533 anytime. Please feel free to call.

Sincerely,

*Brent, Erin, Chase and Madison Fleck*  
*Laurie River Lodge*



# HOW TO USE THIS GUIDE

This guide has been created to help our guests organize and prepare for their 2024 Northern Manitoba Fly-in fishing adventure at Laurie River Lodge. It contains helpful information that, if followed, will take much of the guesswork out of your trip planning activities.

There are two sections in this guide:

1. The first section is for all Laurie River Lodge (Main Lodge & Outpost) guests. It has helpful information about travel planning, border crossings, hotel telephone numbers and general information that all our guests should know.
2. The second section is specifically written for those guests who will be staying at our American Plan Lodge. It contains information about the meals, guides, boats, motors, gratuities, tackle, lodge policies, fish and a host of important facts that will help you prepare for your American Plan Lodge trip.

Please take the time to read and understand the information contained in this Manual. I have tried to make the guide as specific and comprehensive as possible while keeping it easy to read and understand.

Look for really important information to be highlighted in yellow like this sentence.

Thank you for choosing Laurie River Lodge as your 2025 northern Manitoba fly-in fishing destination.

Erin, the kids and I are looking forward to making your time at our little bit of paradise your best fly-in fishing vacation ever.

See you in Manitoba this summer. Have a great day from your Canadian friends at Laurie River Lodge.



## TABLE OF CONTENTS

### Sec.# Topic

- I-0 General information for all guests
- I-1 Travel, Hotel and Airline Info
- I-2 2025 Changeover Schedule
- I-3 Crossing The Border
- I-4 Things To Do In Winnipeg
- I-5 Packing For The Trip
- I-6 Hospitals, Medical Emergencies, Insurance
- I-7 Tackle, Sundry Items, Snacks & Alcohol
- I-8 Telephone & Internet
- I-9 What You Can Expect From Us – What We expect From You
- I-10 Fishing Tackle & Equipment
- I-11 Summertime Temperatures
- I-12 Payment Policies
- I-13 Notes Page
  
- 2-0 Information for American Plan Lodge Customers
- 2-1 Introduction to American Plan Lodge
- 2-2 Home Base For Your Fly-in Fishing Adventure
- 2-3 American Plan Meals
- 2-4 What To Pack
- 2-5 Trip Costs
- 2-6 Notes Page
  
- 3-0 Closing
- 3-1 Important Telephone #'s, Addresses & E-mail Addresses

# SECTION #I-0

## GENERAL INFORMATION FOR ALL GUESTS

- I-0 General information for all guests
- I-1 Travel, Hotel and Airline Info
- I-2 2025 Changeover Schedule
- I-3 Crossing The Border
- I-4 Things To Do In Winnipeg
- I-5 Packing For The Trip
- I-6 Hospitals, Medical Emergencies, Insurance
- I-7 Tackle, Sundry Items, Snacks & Alcohol
- I-8 Telephone & Internet
- I-9 What You Can Expect From Us – What We Expect From You
- I-10 Fishing Tackle & Equipment
- I-11 Summertime Temperatures
- I-12 Payment Policies
- I-13 Notes Page



## SECTION I-I TRAVEL, HOTEL & AIRLINE INFO:

By now we should have picked dates and, if you haven't already done so, you should be making your airline reservations into Winnipeg. Remember that you will need to arrive in Winnipeg **NO LATER** than the afternoon before your trip is scheduled to start at Laurie River Lodge. We will have you back in Winnipeg by approximately 1:30 PM on the afternoon of the day you depart from Laurie River Lodge. I do not suggest booking a flight out of Winnipeg before 3:30 PM as you will be required to pre-clear US Customs and airport security before boarding your flight back to the US. I have put our 2025 Trip Schedule on the following page to make it easy for you to select the days that you should be traveling.

In the interest of convenience, I am asking all of my clients to spend their night in Winnipeg at the **Courtyard Marriott Hotel** located right at the **Winnipeg International Airport Terminal**. In 2024 we negotiated a rate of \$144.00 Can. + applicable taxes (about \$130.00 US) per double room. We don't expect this rate to increase very much in 2025. Our contact at the Marriott is Kamal Kaur. You may reach Kamal via email at: [kamal@courtyardwpg.com](mailto:kamal@courtyardwpg.com) You can also make your hotel reservation through the main reservation center by sending your request to: [dir.salesywg@brockhotels.com](mailto:dir.salesywg@brockhotels.com) or by calling 204-505-8600. Be sure to include the number / type of rooms, the names of the occupants and the date you are looking for. I strongly suggest booking your hotel rooms as soon as you can to ensure availability. Be sure to ask for the Laurie River Lodge room rate.

**PLEASE NOTE THAT THIS RATE INCLUDES SHUTTLE TRANSPORTATION FROM THE COURTYARD TO THE DEPARTURE HANGER ON THE 1<sup>st</sup> MORNING OF YOUR TRIP. YOU MUST MAKE YOUR HOTEL RESERVATION THROUGH KAMAL OR THE RESERVATION E-MAIL SO THEY CAN ADD YOU TO THE LIST OF GUESTS THAT WILL NEED TRANSPORTATION TO THE DEPARTURE HANGER. IF YOU MAKE YOUR HOTEL RESERVATION BY ANY OTHER MEANS (ORBITZ, EXPEDCIA ETC.) THERE WILL BE AN ADDITIONAL CHARGE FOR THE SHUTTLE TO THE DEPARTURE HANGER.**

Nowadays, pretty much everyone is equipped to make their own airline reservations to Winnipeg on their own through one of the various travel web sites (Orbitz, Expedia etc.) There is little need for a travel agent. If you prefer to deal directly with the airlines, here is their contact information. The toll-free number for Delta Airlines is 1-888-750-3284. their web site is [www.delta.com](http://www.delta.com). United Airlines toll free reservations number is 1-800-864-8331 or you can contact them via E-mail at [www.ual.com](http://www.ual.com). Once you have secured your transportation into Winnipeg, please take the time to drop me an E-mail or call me with your flight numbers and arrival times so I can add that information to my guest profile. It will save me time in case of travel problems.

For those of you who will drive to Winnipeg you basically need to follow the same schedule. Plan to arrive in Winnipeg in time to spend the night at the Courtyard and be in the lobby at 05:15 AM on the morning your trip is scheduled to start. There is secure parking in the Winnipeg International Airport Long Term Parking Lot or in the Courtyard Hotel parking lot.



Customers driving all the way to Lynn Lake should plan to be at the Eldon Lake Water Base in Lynn Lake by 09:00 AM on the morning their trip is scheduled to start. Some guests that drive to Lynn Lake find it is easier to spend the night in Thompson, MB and make the last 4-hour leg to Lynn Lake on the first morning of their trip. There are several hotels in Thompson, here is a list of their names and telephone numbers in order of preference: Days Inn (204-778-6000), Quality Inn (204-677-5600), Best Western (204-778-8887).

For those guests who prefer to go all the way to Lynn Lake your best choice for accommodations in town is Northern Nights B&B. The owners name is Connie Cockerill and you can reach her at 204-356-2501 or via e-mail at [conniecockerill@gmail.com](mailto:conniecockerill@gmail.com). Your other choices are The Lynn Inn (204-356-2433), The Bronx Hotel (204-356-2471).

Guests flying private aircraft into Lynn Lake can get airport information, setup fuel and get other pertinent flying information by calling the **Lynn Lake Airport Authority at 1-204-356-2900**. **Please provide us with your aircraft type, Registration and ETA in Lynn Lake so we can have the float planes ready to meet you.**

## SECTION I-2 2025 CHANGEOVER SCHEDULE:

Trip #1- Sat. May 31 <sup>st</sup> - Wed. June 4 <sup>th</sup>	Trip #8- Sat. June 28 <sup>th</sup> - Wed. July 2 <sup>nd</sup>	Trip #15- Wed. July 30 <sup>th</sup> - Sun. Aug. 3 <sup>rd</sup>
Trip #2- Wed. June 4 <sup>th</sup> - Sun. June 8 <sup>th</sup>	Trip #9- Wed. July 2 <sup>nd</sup> - Sun. July 6 <sup>th</sup>	Trip #16- Sun. Aug. 3 <sup>rd</sup> - Sat. Aug. 9 <sup>th</sup>
Trip #3- Sun. June 8 <sup>th</sup> - Thur. June 12 <sup>th</sup>	Trip #10- Sun. July 6 - Thur. July 10 <sup>th</sup>	Trip #17- Sat. Aug. 9 <sup>th</sup> - Tue. Aug. 19 <sup>th</sup>
Trip #4- Thur. June 12 <sup>th</sup> - Mon. June 16 <sup>th</sup>	Trip #11- Thur. July 10 <sup>th</sup> - Wed. July 16 <sup>th</sup>	Trip #19- Tue. Aug. 19 <sup>th</sup> - Mon. Aug. 25 <sup>th</sup>
Trip #5- Mon. June 16 <sup>th</sup> - Fri. June 20 <sup>th</sup>	Trip #12- Wed. July 16 <sup>th</sup> - Sun. July 20 <sup>th</sup>	
Trip #6- Fri. June 20 <sup>th</sup> - Tue. June 24 <sup>th</sup>	Trip #13- Sun. July 20 <sup>th</sup> - Thur. July 24 <sup>th</sup>	
Trip #7- Tue. June 24 <sup>th</sup> - Sat. June 28 <sup>th</sup>	Trip #14- Thur. July 24 <sup>th</sup> - Wed. July 30 <sup>th</sup>	

**PLEASE NOTE THAT TRIPS # 11, #14, #16, #18, #19 ARE 6-DAY TRIPS**

## SECTION I-3 CROSSING THE BORDER:

While crossing into Canada is normally a routine thing it is always wise to remember that you are crossing into a foreign country and there are protocols and procedures that you will need to follow. The process is pretty straight forward as long as you have the right answers and documentation for the Customs Officers.

First and foremost, remember that, for the few minutes that you are being interviewed by a Canadian Customs Officer, that individual has the future of your fishing trip in his hands. It pays to be attentive and listen carefully to his questions. Answer him clearly and honestly, like the US Customs Officials, they are trained to look for people who are trying to deceive them.

Here are some of the things that you will be asked for when crossing the border into Canada:

### **IMPORTANT NOTE:**

**As of October 31<sup>st</sup>, 2022 there are no longer any COVID-19 requirements for entering Canada. You do not need to be vaccinated and you do not have to fill in the ArriveCan APP.**

- I. **Your Passport. The United States Government requires all travelers crossing into the USA (residents and non-residents) to have a valid Passport. This includes**

**US citizens traveling back to the USA. The passport rule now applies to all modes of transportation entering the US. We are advising all of our customers to plan ahead and get their Passports as soon as possible. Your Nexus Card does not qualify as a Passport. You must have the original document, not a photocopy. Your Passport must be signed. Please check the expiry date on your passport to make sure it is valid.**

2. You will be asked if you have any alcohol or cigarettes with you, all these items must be declared. You are allowed to bring 1 - 26-ounce bottle of hard liquor or 24 – 10-ounce cans of beer and 1 carton of cigarettes into Canada without paying duty but you still need to declare it at the border. A better choice may be to use the duty-free facilities at the airport.
3. You will also be asked if you have any firearms with you. Unless you are coming on a hunting trip there is no need to bring a firearm to Laurie River Lodge and you are advised to leave them at home.
4. **If you are bringing a minor (someone under 18 years of age) with you and you are not the sole legal guardian (Example = Grandchild) you should have a notarized letter from the child's Legal Guardian (both parents if available) giving you permission to take him or her out of the country in addition to the ID mentioned above. Even fathers who are bringing their non-adult sons or daughters on a trip should have a notarized letter from the child's other legal guardian giving permission to travel. This little thing can save many headaches at the border.** The letter should contain express permission for you to take the minor out of the USA and into Canada. It should also have the contact information for the other legal guardian, both telephone and e-mail so the customs office can easily reach him / her if they have further questions.

Occasionally there are issues that arise with Customs Officers that could lead to a confrontation. I urge you to maintain a calm, courteous composure. There is nothing to be gained, and much to be lost, by being confrontational with a Customs Officer. If an issue does arise, work it out the best you can and politely ask for his identification number, document the issue as best you can and give the information to me when you arrive at Laurie River Lodge. As the Past President of the Manitoba Lodges and Outfitters Association I have access to the proper channels to submit complaints about overly aggressive or unfriendly customs officers and, believe it or not, I get results when I submit a complaint in the proper fashion.

## **SECTION 1-4 THINGS TO DO IN WINNIPEG:**

Well here you are, across the border and all checked into your hotel now what should you do? Depending on the arrival time of your flight you might want to just grab a quick bite to eat at the hotel Restaurant and get a good nights sleep or you might want to see what downtown Winnipeg has to offer. If the later is the case you will find no end to the exciting things to do, I suggest you check out the **City of Winnipeg Web site at [www.mywinnipeg.com](http://www.mywinnipeg.com)** to get some ideas. If you are looking for a really nice meal to start off your vacation I do have a suggestion. **There is an excellent**



steak house on 529 Wellington in downtown Winnipeg coincidentally called the 529 Wellington. This is without a question the finest Steakhouse in Winnipeg and I strongly suggest a visit, in fact, I have already contacted the management to let them know that a number of our customers would be frequenting their restaurant this summer and they are waiting for your call. Simple call Jim or Carolyn at 204-487-8325 and let them know you are a Laurie River Lodge guest and you would like a reservation. It is about a \$10.00 cab ride from the Courtyard to the 529 Wellington. You may also make advance reservations at the 529 and other great restaurants in Winnipeg via E-mail at [www.opentable.com](http://www.opentable.com).

## SOMETHING EXCITING TO DO IN WINNIPEG

From time to time guests that are flying on commercial airlines will experience delays in their flights to Winnipeg. If those delays do not allow you to reach Winnipeg before 05:00 AM on the morning your trip is scheduled to start you will miss my charter flight to Lynn Lake and are forced to find alternate ways to get from Winnipeg to Laurie River Lodge which can be difficult and is always expensive. For years we have tried to work with the airlines to increase the frequency and reliability of flights into Winnipeg and we have had some success BUT, there are still fishermen that miss their entire trip to Laurie River Lodge because they were unable to get to Winnipeg in time to catch my charter flight north to Lynn Lake.



Thankfully there is an easy way to ensure that you are in Winnipeg in time to catch the charter flight to Lynn Lake. All you need to do is plan on arriving in Winnipeg a day earlier than normal. For example, if your trip to Laurie River Lodge is scheduled from June 4<sup>th</sup> – 8<sup>th</sup> you would normally come into Winnipeg on June 3<sup>rd</sup> and come up to the lodge on the 4<sup>th</sup>. Fish the 4<sup>th</sup>, 5<sup>th</sup>, 6<sup>th</sup> & 7<sup>th</sup> then head back to Winnipeg on the 8<sup>th</sup>. My suggestion is that you take the extra day and plan on arriving in Winnipeg on the 2<sup>nd</sup> of June.

That only leaves one question! What am I going to do with a whole day in Winnipeg with nothing to do and nowhere to go? Thankfully there is an easy answer to that. If you are looking for a truly unique Winnipeg experience, there is an option to spend your extra day fishing the Red River for the HUGE Catfish that live there.

There are many guides that work the Red River. Two of the best are Paul Monroe & Gord Cybulski. They offer full and ½ day fishing trips for HUGE Catfish. In 2024, an 8-hour trip is only \$600.00 Canadian and includes up to 4 fishermen (\$150.00 / fisherman). It is well worth the time and money. They supply all the gear, including bait, keep an adequate supply of bottled water on the boat. Paul or Gordy will pick you up at the hotel before your trip then drop you back off at the hotel after your day of fishing. We have had a number of our guests' fish with them during past seasons. All were impressed with his operation along with the size & quantity of fish they caught. If you think that you may be interested in spending a day fishing for huge Catfish with Paul or Gordy, why not send them e-mail to discuss the trip with the Catfish masters themselves. You can make reservations by calling Paul at 204-461-4511 or sending him an e-mail to [info@catdaddy.ca](mailto:info@catdaddy.ca). Gordy can be reached at 204-795-3226 or via e-mail at [goosemanone@hotmail.com](mailto:goosemanone@hotmail.com).

You get an awesome day of fishing for Catfish and you are assured that you will be able to make your flight to Lynn Lake the next morning. If your flights are delayed and you don't make it to Winnipeg in time to spend the day with Paul or Gordy all you are out is your deposit for the day of Catfish fishing and you still will make your flight to Lynn Lake & Laurie River Lodge.

I want to stress that the Catfishing adventure is purely optional. It is a fun thing to do, relatively inexpensive, and it takes away the worry of missing the charter flight to Lynn Lake due to unforeseen delays in your travel to Winnipeg but, the choice is certainly up to you. I am just throwing it out there as a potential option for all of our guests.

## SECTION 1-5 PACKING FOR THE TRIP:

Without a question deciding what to bring and what not to bring can dramatically affect the success of your trip. Here are some of the things that **all of our customers** will need in order to get the most from their trip.

- Identification, Passports, Airline Tickets
- Personal Items, toothbrush, comb, deodorant razor & shampoo
- Medications, prescription drugs, Advil or Aleve for sore muscles
- Contact solution & extra contacts or glasses
- Camera, extra batteries and plenty of film if the camera requires it.
- Small flashlight with extra set of batteries for finding your way to the cabin after dark
- **Good quality, two piece, Suite Type Rain Gear – not a poncho**
- Ankle high waterproof boots or shoes
- One pair of light shoes to change into after fishing
- A hat that protects you from the sun
- 1 pair of light gloves
- 1 small can bug repellant
- 1 small bottle sunscreen
- Cigarettes as required – your vacation is not the time to try to stop smoking
- 2 pairs of fishing clothes and one set of travel clothes. 8-day customers should bring a couple of extra sets of fishing clothes.
- Polarized Sun Glasses (Rapala makes an excellent set of fishing glasses)
- A Leatherman or Gerber folding tool is handy but not essential

**PLEASE TRY TO KEEP YOUR CHECKED LUGGAGE AT 60 LBS / PERSON.**

## SECTION 1-6 HOSPITALS, MEDICAL EMERGENCIES & INSURANCE:

Although Laurie River Lodge is located in a remote part of Northern Canada, we have surprisingly quick access to medical treatment. Lynn Lake is a mining town and mining towns always have good hospitals. In most cases we can have fishermen in need of medical attention at the Lynn Lake hospital

with one hour. For the more serious problems there is a medivac flight available from Lynn Lake to the University Hospital in Winnipeg. This flight takes less than 3 hours. You should check with your medical insurance provider to see what they offer in terms of coverage while you are out of the country. In some cases it is necessary to purchase a short term supplemental package. Travel Guard is offers a Trip Insurance & Cancellation Policy that many of our customers use. Their Website is [www.travelguard.com](http://www.travelguard.com). You may also reach them at 1-800-826-1300.

Global Rescue offers many travel services such as:

MEDICAL EVACUATION - their fully deployable medical teams have unparalleled capabilities to transport their members back to their home hospital of choice from anywhere in the world. You can view their services at: [www.globalrescue.com](http://www.globalrescue.com) You can reach them at: +1 (617) 459-4200 or +1 (603) 443-5400 AND TOLL FREE USA ONLY: (800) 381-9754.

## SECTION I-7 TACKLE, SUNDRY ITEMS, SNACKS AND ALCOHOL:

In addition to our Tackle Rental Program, we have a fairly well stocked tackle, snack & clothing store setup in the main lodge and Laurie River Lodge is a Manitoba licensed liquor vendor. We offer all the premium brands of hard liquor plus beer and a decent wine selection. When it comes to tackle purchases it is much cheaper for you to purchase your lures in the US and bring them up with you. There are hundreds of tackle dealers in the US who sell lures suitable for use in Canada. I have found Cabela's and Bass Pro Shops to offer the most selection. Cabela's can be reached at 1-800-237-4444 or at [www.cabelas.com](http://www.cabelas.com). Bass Pro can be reached at 1-800-227-7776 or at [www.basspro.com](http://www.basspro.com). More detailed information on lure choices can be found under the Fishing Information and Equipment Section. Remember that I also have a tackle rental program. For \$125.00 you get a Walleye Rod, A Pike Rod, A Lake Trout Rod and all the terminal tackle for the duration of your Trip. We feature Pfluger Reels and dependable Shakespeare Ugly Stick Rods in both Spinning and Bait-Casting configurations.

## SECTION I-8 TELEPHONE AND INTERNET SERVICE:

We have telephone communications via satellite that is available to our guests. In an emergency family members can reach you at the lodge by dialling 1-800-426-2533. While this telephone is available to our guests we do ask that you keep your calls to a minimum as we have only 1 line. Wireless high-speed internet is available in the main and guest cabins. This is a free service and those of you with wireless capable laptops or smart phones can bring them along and access the internet and your E-mail accounts while you are at the lodge.

## SECTION 1-9 WHAT YOU CAN EXPECT FROM US – WHAT WE EXPECT FROM YOU:

As the operators of a full service, first class American Plan Fishing Lodge Erin and I realize that the comfort, safety and enjoyment of our guests rest fully on our shoulders. We are owner operators and as such are always on hand to oversee the smallest details of your trip. We hire a competent staff, provide modern facilities, safe and reliable equipment and ensure that necessary supplies are always available. In order to keep things running smoothly and ensure a high quality trip for all of our customers we have found it necessary to setup some guidelines or policies that we ask everyone to adhere to. Here are some of those policies:

- All aircraft are subject to weight restrictions. Please keep your personal baggage, including rods & tackle, at 60 lbs. or less, guests with more than 60 lbs of baggage will be subject to excess baggage charges.
- In Manitoba fishing with barbless hooks is mandatory. Please be prepared to bend down the barbs on any lures that you have tied to a fishing rod. You are not required to have the lures in your tackle box de-barbed until you begin to use them. At Laurie River Lodge we strongly support barbless fishing; it is easier on the fish and makes you a better fisherman. You might even find that you want to adopt the practice at home.
- Even though we are fishing an ultra remote portion of northern Canada studies have shown that trophy size Northern Pike (41" +) are over 20 years old, constant removal of Pike from a system will quickly deplete the supply of existing and future trophies. We ask our customers to release all Northern Pike. Since our customers are the only fishermen using these waters the catch and release program will ensure that we have a good supply of trophy fish forever.
- No day of fishing is complete without shore-lunch. Our guides will keep enough Walleye for a delicious shore-lunch every day. In addition, the Manitoba limit on Walleye is 4 fish per person. If you wish to take your limit of 4 Walleye home with you just let your guide know and he will keep 4 fish between 18 & 22 inches for you to take home. We will fillet your fish, freeze them and pack them in special cooler bags for your trip home.
- We run a complimentary hard liquor bar in the main lodge. I do, however, charge for beer, wine, soda pop & bottled water consumed while you are at Laurie River Lodge. I also have hard liquor for purchase if you want an additional bottle for your cabin.
- We take great care when hiring our staff. They are responsible for your health, safety and welfare while you are at Laurie River Lodge. The consumption of alcohol impairs their ability to serve you; therefore, we ask that you do not offer any of our staff anything alcoholic. This is rarely a problem and by telling you in advance I hope to avoid it altogether.

- Although northern Canada is relatively safe in terms of wildlife there are a few animals such as Bears, Wolves, Moose, Caribou, Wolverine etc. that can turn violent in the right circumstances. While it is exciting to see these animals in their natural environment, we ask that you exercise great caution when in the close proximity of wild animals. Listen to your guide and do exactly as he asks.
- Power generation costs money and in an effort to keep costs at a minimum I will shut off the generator at midnight and restart it at 05:30 AM on a daily basis. If you need power for medical reasons, we can make arrangements to leave the power on or supply you with inverters and batteries.
- Like most provinces & states, Manitoba has gone to an e-licensing system for the sale of its hunting and fishing licenses. You can easily purchase your hunting and fishing licenses on-line, well in advance of your arrival at Laurie River Lodge. First you setup an account then you purchase your license and print it out or download it to your phone. Simply go to [www.manitoba.licensing.ca](http://www.manitoba.licensing.ca). If you have purchased a Manitoba hunting or fishing license online before you can just sign into your account and purchase the 2025 Non-Resident Angling License and print yourself a copy. If you have not purchased a Manitoba hunting or fishing license on-line in the past you will first need to setup an account, then log into that account to purchase your Non-Resident Angling License. It is pretty straight forward but, if you have issues we can always walk you through it when you arrive at the lodge.
- You are responsible for the safe use of your equipment. Fishing rods, hooks and knives can all be very dangerous if used incorrectly. Please exercise care and listen to your guides at all times.
- Laurie River Lodge is not a non-smoking facility but, we ask that you take non-smoking guests into consideration when using tobacco products. The outdoor porches on each cabin and a fully covered, screened in porch on the main lodge are excellent places to enjoy your favourite Cuban cigar. Please do not smoke inside our cabins or the Main Lodge.

## SECTION 1-10 FISHING INFORMATION AND EQUIPMENT:

At Laurie River Lodge our guests have the opportunity to fish for several different species of fish. The biggest and most popular is the Northern Pike. Walleye are always fun to catch and their widespread popularity as the perfect fish for shore-lunch keeps them high on every fisherman's want list. Lake Trout are often underrated as a sport fish but they should not be overlooked. These cold water carnivores are strong fighters that can grow to over 70 pounds. The 6 to 10 pounders make an excellent shore lunch. The Laurie River also offers incredible White Fish, Perch and Maria but most fishermen prefer to concentrate on the Big Three.

## NORTHERN PIKE



For many anglers merely mentioning Northern Pike brings back memories of fast swimming, hard hitting action. Pike are indigenous to nearly all water in northern Canada. They will grow to over 30 pounds and more than 4 feet in length. Sharp teeth make steel leaders necessary.

### What To Bring For Pike:

Most fishermen prefer a medium to medium heavy action 2-piece rod

15 to 17 pound test line is a good choice

Either Spinning or bait casting reels will work fine.

Pike also respond well to fly fishermen an 8-9-weight rod, weight forward sinking line and large streamer fly's are preferred

**Remember you will be casting this rod a reel combination several hundred times per day**

Favourite lures include but are not limited to:

- #2 & #4 red & white Daredevil spoons
- #2 & #4 yellow and red 5 of Diamonds by Len Thompson
- ¾ oz and 1 ¼ oz Johnson Silver Minnow Weedless in gold, silver & perch
- # 4 & #5 Mepps Aglia with a gold blade
- All Rapala top water, diving & countdown lures 3" or longer
- All top water baits including spinner and buzz baits
- Blue fox pixie spoons in all colors and at least 2 ½" in length
- Cabela's Real Image weedless spoons in ¾ oz size
- Lucky Strike Half Wave Spoons in gold with red & white and silver with red & white – 1 1/4 oz work best
- Red Eye Wiggler lures in all colors – the 3" by 1 oz works well
- Good quality 30 pound test steel leaders with ball bearing swivels are an necessity

This is a list of lures that no Pike fisherman should be without. I realize that there are hundreds of other lures that will work well on Pike, but if you have the ones listed here you will have a



pretty good start on Pike fishing. If you are a bass fisherman do not hesitate to bring your Bass lures with you, especially the top water stuff. Pike will tear them up. It is also a good idea to bring an extra rod along in case yours gets broke. I suggest a middle of the road spinning outfit that can double as a walleye or pike rod.

## WALLEYE



Shore lunch!! Need I say more? Walleye rank among the tastiest of all freshwater fish and no shore lunch is complete without them. These tasty fish will get up to 10 pounds and over 30 inches in length. Catching Walleye requires a bit of finesse but once mastered they can provide hours of fishing fun.

### What To Bring For Walleye:

Most fishermen prefer a light to ultra light 5' one piece rod

8-pound test line is a good choice

Either Spinning or bait casting reels will work fine.

**Remember Walleye take finesse. A sensitive rod helps feel the bite.**

Favourite lures include but are not limited to:

- **1/4 oz & 3/8 oz lead head jigs tipped with a frozen minnow work best (we have frozen minnows for sale at the lodge).**
- Diving Rapala lures in the 2" size will also catch Walleye in running water
- I find white, yellow, chartreuse, black and gold to be popular colors
- As with the Pike lures this is by no means a complete list of every lure that will catch a Walleye but if you have a good supply of the lures mentioned above you defiantly will not go hungry at shore lunch.
- **Our guides will have hook removal tools and landing equipment in the boat.**

## Lake Trout



Hang on to that rod tight. Lakers are known for their strength. It is not unusual to have one almost to the boat and then see him make a dive into 100 feet of water. Lake Trout can be over 70 pounds and 40" in length, they will eat almost anything that you can get in front of them but sometimes that can be tricky.

### What To Bring For Lakers:

**Most fishermen prefer a medium heavy to heavy action rod (I have loaner rods at the lodge) 20-pound test line is a minimum choice. Bait casting or level wind reels are necessary.**

Lakers tend to eat big heavy lures and fight hard when hooked. Much of the tackle you use for Northern Pike will work for Trout. I have always found that shiny lures work best.

Favourite lures include but are not limited to:

- #4 red and yellow 5 of Diamonds by Len Thompson
- Red Eye Wigglers in gold and silver. I recommend the 3" by 1-oz size
- Doctor spoons in gold, silver and red/white in the 4 1/2" size
- Williams Wobblers in all colors. The 4" by 1-oz size is recommended.
- 2 oz Lead Head Jigs with stinger hook in white, yellow & chartreuse

## **SECTION I-II SUMMERTIME TEMPERATURES:**

As a rule, the summertime weather in northern Manitoba is quite comfortable. The days are long with lots of sunshine and rain generally comes in the form of afternoon thundershowers. However, you will be fishing a mere 300 miles West of the Hudson Bay and occasionally we will get a northeast weather pattern that brings high winds and rain off the bay and right into our laps. These systems can (but rarely do) last for 48 hours or more. Hence the reason for the good quality, two piece, suite type rain gear mentioned earlier in this guide. It is always a good idea to dress in layers of clothing that can be added or removed as the weather dictates. This is not a fashion show, nobody cares what you look like as long as you are warm and dry you will be comfortable. Remember that the clothes you wear fishing need to be loose fitting to allow full movement of your arms when you are casting and your whole body when you are fighting that Pike of a lifetime.

The table below depicts the average summertime temperatures at Laurie River Lodge over the last three summers. It is important to remember that the temperatures quoted in this table are averages. The actual temperatures can vary substantially from the averages. For an accurate forecast please log on to [www.laurieriverlodge.com](http://www.laurieriverlodge.com) and click the current forecast button. You will be routed to Environment Canada's web site where you will see a current and five day forecast for the Lynn Lake area. This is the most accurate weather forecasting site I have been able to find for our area.

Trip #	Average daily High	Average Daily Low
Trip # 1	57	30
Trip # 2	60	35
Trip # 3	66	40
Trip # 4	68	42
Trip # 5	69	44
Trip # 6	72	44
Trip # 7	74	49
Trip # 8	74	48
Trip # 9	72	48
Trip # 10	73	48
Trip # 11	74	49
Trip # 12	77	52
Trip # 13	78	52
Trip # 14	70	48
Trip # 15	72	48
Trip # 16	70	51
Trip # 17	70	52
Trip # 18	70	53
Trip # 19	78	53
Trip # 20	72	49
Trip # 21	65	35

Remember that you are travelling to northern Canada, although the temperatures are normally quite comfortable, Mother Nature can occasionally throw a little cold weather or way. It is best to be prepared with good rain gear and warm clothing. Buy the best clothing you can afford – you will not regret it!!

## SECTION 1-12 PAYMENT POLICIES:

For Erin and me running a first-class fly-in fishing lodge in northern Manitoba is not only a passion it is also a business! As such we rely on Laurie River Lodge and you, our guests, for our living. The money you spend at Laurie River Lodge not only keeps the place operating but it also supplies food, shelter, transportation and education for my family.

Like all successful business owners, we have set guidelines with regard to the collection of funds.

Here is how it works:

Once you decide to fish or hunt with us at Laurie River Lodge and we have picked appropriate dates I will request a \$1000.00 / person deposit from you. This deposit does a couple of things for both of us. First it assures me that you are actually going to make the trip and second your deposit gives me some much-needed wintertime cash flow. Once I know for sure that a group has made reservations I can move forward with booking charter seats, assigning guides and making cabin reservations. **The deposit is due within 7 days of the time that you make your reservation. It is important to realize that no airline, cabin or guide reservations will be made for you until your deposit is received. Deposits are non-refundable; however, should it become necessary to cancel your trip we will credit your deposit to your trip the following year.** Deposits are also transferable from one guest to another so if one member of your group is unable to make the trip you can substitute another individual without losing the first person's deposit **as long as the group size remains constant.** Deposits may also be carried over, in full, to a trip the following year but, only the following year. When we receive your deposit, we will send you a letter confirming its receipt along with this trip planning guide so you can start putting your gear together for your trip.

Starting about March 15<sup>th</sup> Erin will begin sending out invoices for the balance of your trip. On this invoice there will be a space for things like optional fly-outs, sundry purchases etcetera. **In all cases Trip balances are due by May 1<sup>st</sup>.** Once in a while we have a customer that sends in a prepayment and then has some type of unexpected emergency arise that simply does not allow him to make the trip. No problem, **if it is more than 45 days before your scheduled arrival at Laurie River Lodge you have your choice of asking for a refund or simply holding the prepayment for a trip later in the summer or the following year. If it is less than 45 days before your scheduled arrival your deposit & prepayment will be held and credited, in full, for a trip later in the summer or the following year.**



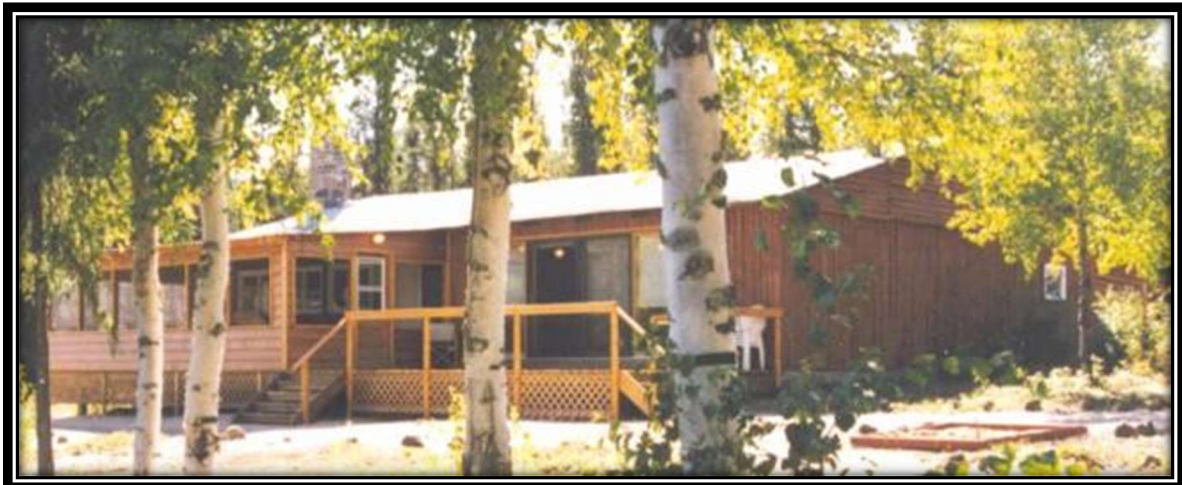
At the end of your trip, usually after dinner on the last night, I will present you with a full statement of your trip. This statement will reflect all deposits, prepayments and debts that pertain to your trip. Unless you added some extra funds to your prepayment check to cover things like fly-outs, beer, pop and sundry purchases there is likely to be a small balance owing at this time. **Please remember to bring some form of payment with you.** At the request of several of our customers we are proud to announce that we are now able to accept Visa and MasterCard as forms of payment for deposits, prepayments and trip balances. **Unfortunately, margins in the fishing lodge business are tight and in an effort to keep my prices as low as possible I am forced to add a 3% service charge to any credit card transactions. If you are uncomfortable with the %3 service charge, please do not plan to pay with a credit card.**

[illegible]

# SECTION #2-0

## INFORMATION FOR AMERICAN PLAN LODGE FISHERMEN:

- 2-0 Information for American Plan Lodge Customers
- 2-1 Introduction to American Plan Lodge
- 2-2 Home Base For Your Fly-in Fishing Adventure
- 2-3 American Plan Meals
- 2-4 What To Pack
- 2-5 Trip Costs
- 2-6 Notes Page



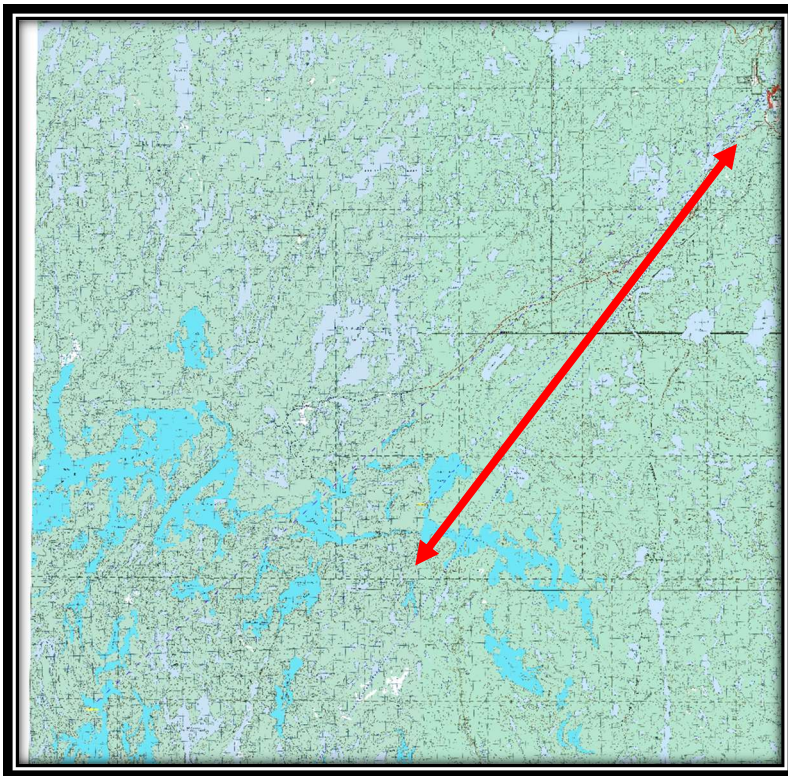


## SECTION 2-1 TO OUR AMERICAN PLAN LODGE FISHERMEN:

As fishing lodges go you have chosen the cream of the crop. First class accommodations, top of the line equipment, beautiful main lodge, professional guides, incredible food, full American Plan Service and northern Manitoba's finest fly-in fishing all come together on the picturesque Laurie River System just 30 air miles southwest of Lynn Lake Manitoba.

While you are a guest at Laurie River Lodge you will have access to the entire first 40 miles of the Laurie River System from the Laurie Lake headwaters on the Saskatchewan / Manitoba border through the productive waters of Tod Lake then down stream into some incredible Pike and Walleye habitat on Eager and Pyta Lakes and finally emptying into McGavock Lake where Laurie River Lodge is actually located. The picturesque beauty and abundant fish have kept fishermen returning to Laurie River Lodge since 1964. Our catch and release and barbless fishing policies ensure that this incredible fishery will remain strong for your children and grandchildren to enjoy in the years to come. In addition to the main chain of lakes that make up the Laurie River System there are several lakes within 30 air miles of Laurie River Lodge. These lakes are accessible only by air and offer adventurous fishermen their own lake for the entire day. Fly-outs are conducted with our fully restored DeHavilland Beaver aircraft and are setup to give each fisherman a full nine hours of fishing on each daily fly-out yet get everyone home in time for a specially prepared gourmet dinner.

### ***LAURIE RIVER LODGE***



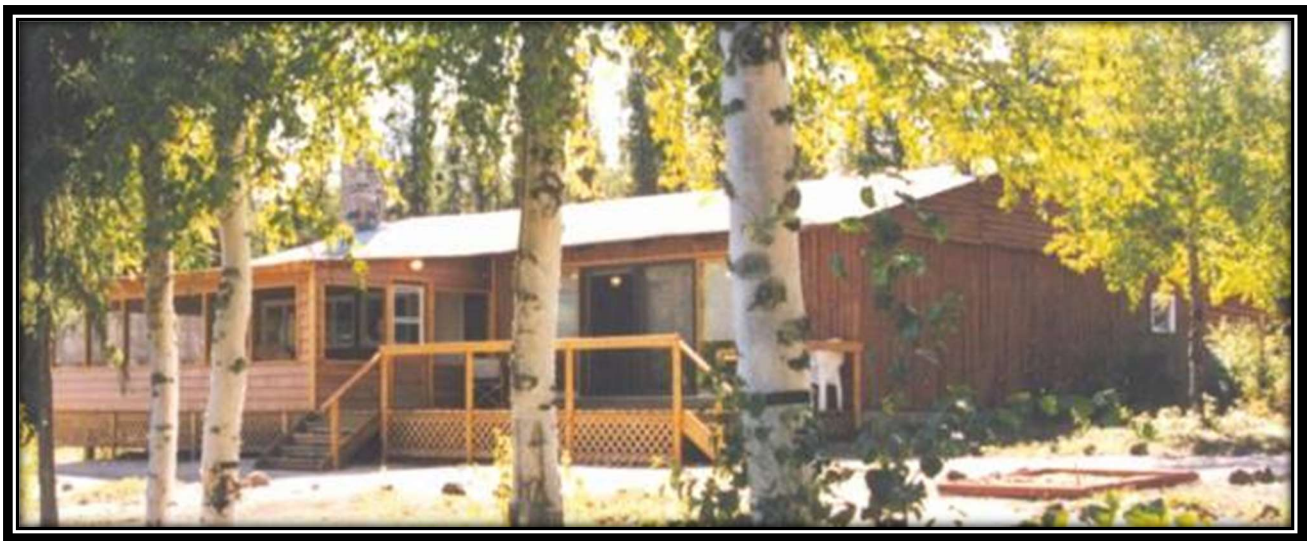
*Strategically located in the heart of northern Manitoba's finest Northern Pike, Walleye and Lake Trout habitat Laurie River Lodge offers discriminating fishermen access to the first 40 miles of the Laurie River and several other lakes in the area south west of Lynn Lake, Manitoba. There is more water than even our 8-day customers can hope to see in a single trip.*

## SECTION 2-2 HOME BASE FOR YOUR NORTHERN MANITOBA AMERICAN PLAN FLY-IN FISHING ADVENTURE:

Laurie River Lodge is actually a complex of buildings constructed on the West shore of McGavock Lake. The complex consists of a 40' by 60' main lodge, four 20' by 20' guest cabins, two 40' by 40' guest cabins, a 30' by 30' office building, a 24' by 70' staff cabin and several guide accommodations. Depending on the size of your group you will be housed in one of our fully modern guest cabins.

Each cabin has private bedrooms, fully modern bathrooms, hot showers, comfortable beds, large living rooms, and 8' by 16' decks overlooking McGavock Lake.

We are running 18' Alumarine Boats & 40 HP Yamaha Motors. Each boat is equipped with padded swivel seats, casting decks, nets, landing cradles, anchors, paddles, and a Transport Canada Approved life saving / emergency kit.



*ALL OF OUR ACCOMMODATIONS OVERLOOK THE BEAUTIFUL WEST END OF MCGAVOCK LAKE.*



## SECTION 2-3 OUR AMERICAN PLAN MEALS:

Laurie River Lodge has always been famous for its food. Guests will enjoy the hearty combination of Red River Cereal, meats, pancakes, eggs, cold cereal and fresh fruits for breakfasts but the mouth really starts to water when your mind wanders through our dinner entrees. Just think about it, A Prime Standing Rib Roast with Twice Baked Potatoes, Chicken Breast in Tequila Lime Sauce, Thanksgiving Dinner with all the trimmings, French Cut Veal Chops in a Honey Garlic Sauce on a bed of Manitoba Wild Rice, Pork Tenderloin in a Black Current Gin Sauce, Cajun Style Cornish Game hens, even 10 oz. New York Steaks cooked to perfection outdoors over a bed of coals. Don't forget the daily shore lunches. Fresh caught Walleye, Onions, Potatoes, Beans, Corn and perhaps a cold Molson Canadian to wash it all down. Are you hungry yet? If you need more information about our meal program at Laurie River Lodge, please feel free to call me. In most cases we can handle any special dietary need of our customers, don't be afraid to ask. If it can be done, we will do it.

## SECTION 2-4 WHAT TO PACK FOR YOUR AMERICAN PLAN TRIP:

Section 1-5 pretty much covers the clothing and personal gear you need to bring on the American Plan Lodge trip. The cabins have propane heaters that will dry clothing and we have washing machines and clothes dryers available for customers that find themselves short on clean clothes. Having more services available means that you don't have to bring as much with you, however, you must keep in mind that good raingear and warm clothing that can be worn in layers is the best insurance against the elements. As the saying goes you can always take it off. Please be prepared for bad weather, the surest way to conjure up a rainstorm is to leave the lodge without your rain gear. If your baggage weighs more than 60 lbs you will be subject to excess baggage charges.

Here is a list of what I suggest for a 4-day trip:

- **Identification, Passports, Airline Tickets, Check Book and Travelers Checks**
- Personal Items, tooth brush, comb, deodorant razor & shampoo
- Medications, prescription drugs, Advil or Alive for sore muscles
- Contact solution & extra contacts or glasses
- Camera, extra batteries and plenty of film if the camera requires it.
- Small flashlight with extra set of batteries for finding your way to the cabin after dark
- **Good quality, two piece, Suite Type Rain Gear – not a poncho**
- One pair ankle high waterproof boots or shoes
- One pair of light shoes to change into after fishing
- A hat that protects you from the sun
- 1 pair of light gloves
- 1 small can bug repellant
- 1 small bottle sunscreen
- Cigarettes as required – your vacation is not the time to try to stop smoking



- 2 pairs of fishing clothes and one set of travel clothes. 8-day customers should bring a couple of extra sets of fishing clothes.
- Polarized Sun Glasses (Rapala makes an excellent set of fishing glasses)
- A Leatherman or Gerber folding tool is handy but not essential

Please note each set of fishing clothes should consist of a good thick pair of socks, unrestricted undergarments, loose fitting trousers, "T" shirt and sweater and a light wind breaker type jacket. For the first and last 6 trips I suggest adding a pair of long handled underwear as well.

## SECTION 2-5 LET'S TALK ABOUT COSTS:

If you read through section 1-9 you already know what is included in your selected trip and since you have already booked your trip and purchased your tickets into Winnipeg (I hope) you have a pretty good idea what the base price of your trip. What you might be wondering is what are some of the incidental charges that you might incur. Please remember that many of the prices below are estimates and others, like gratuities, are at the discretion of the fisherman.

All funds are quoted in US \$\$

The 2025 Manitoba Non-resident Fishing License is \$ 65.00 US

The Manitoba Provincial Sales Tax is calculated at 3.5% of your base price and 7 % on Sundry items  
The Federal Goods and Services Tax is calculated at 5%.

Daily Fly-outs = \$570.00 / Fisherman / Fly-out. (Please note that this is subject to change without notice)

Beer = \$5.75 / bottle

Pop = \$2.50 / can

Wine = \$20.00 – \$80.00 / bottle.

Shirts, hats, other sundry items = \$2.00 – \$85.00

Gratuities: Kitchen staff = \$50.00 / guest / day, Dockhand = \$25.00 / guest / day, Guide \$100.00 / guest for the 4-day trip; \$150.00 / guest for the 6 day trip and \$200.00 / guest for the 8-day trip + \$50.00 / trophy fish.

I realize that a fishing trip to Laurie River Lodge is not an inexpensive adventure but when you consider where you are going, and the operational expenses related to running a first-class fly-in fishing lodge in a remote setting I am sure you will agree that our prices are not out of line. I can assure you that Erin and I will do our very best to ensure that you get every penny worth.

Forms of Payment:

- Personal Check
- Corporate Check
- Travelers Checks
- Visa or MasterCard **with a 3% service charge**



NOTES: \_\_\_\_\_

[illegible]

## SECTION 3-0 CLOSING:

It is my sincere hope that this Trip Planning Guide has helped you prepare for your northern Manitoba fly-in fishing. If there is something that you need more help with or if you are having trouble finding any of the items mentioned in this guide, please feel free to call me at 1-800-426-2533 anytime. I will be happy to assist you.

Thank you again for choosing Laurie River Lodge as the venue for your next northern Canadian fly-in fishing or hunting trip. Erin, the kids and I are looking forward to seeing you at our little bit of paradise in northern Manitoba during the 2025 season.

Have a great day.

Sincerely,

*Brent*

Brent, Erin, Chase & Madison Fleck

Laurie River Lodge

## SECTION 3-1 IMPORTANT TELEPHONE #S AND E-MAIL ADDRESSES:

<b>Laurie River Lodge</b>	<b>1-800-426-2533</b>	<a href="mailto:Brent@laurieriverlodge.com">Brent@laurieriverlodge.com</a>
<b>Kmal @ Courtyard Hotel</b>	<b>204-505-8600</b>	<a href="mailto:reservations@courtyardwpg.com">reservations@courtyardwpg.com</a>
<b>United Airlines</b>	<b>1-800-864-8331</b>	<a href="http://www.ual.com">www.ual.com</a>
<b>529 Wellington</b>	<b>1-204-487-8325</b>	<a href="http://www.OPENTABLE.COM.com">www.OPENTABLE.COM.com</a>

**Laurie River Lodge Winter Address:**

**(September 15<sup>th</sup> - May 15<sup>th</sup>)**

**RR#2**

**Ponoka, AB, Canada**

**T4J 1R2**

**Laurie River Lodge Summer Address:**

**(May 16<sup>th</sup> – September 14<sup>th</sup>)**

**PO Box 550**

**Lynn Lake, MB, Canada**

**R0B 0W0**